

## PROCALCITONIN (PCT) ASSAY\*

### LIQUID STABLE ASSAY

USA: For Research Use Only

EU:  

#### **EARLY IDENTIFICATION OF SEPSIS**

- Reports indicate that PCT may be used to assess the severity of infection and monitor the effectiveness of treatment
- In critically ill subjects, studies suggest PCT levels elevate in correlation to the severity of bacterial infection

#### **A TOOL TO DIFFERENTIATE SEPSIS VS. NON-INFECTIOUS INFLAMMATION**

- Studies suggest PCT levels are sensitive to sepsis and bacterial infections, remaining low in viral infections, chronic inflammatory disorders or autoimmune processes
- Recent publications state that PCT levels accurately differentiate sepsis from non-infectious inflammation<sup>1</sup>

1. Simon L. et al. *Clin Infect Dis.* 2004; 39:206-217

#### **DIAZYME'S PCT ASSAY**

- Does not require dedicated instrumentation
- Reagent kit, calibrator and control sets offered separately
- Improved laboratory workflow
- Cost effective





# PROCALCITONIN (PCT) ASSAY

## LIQUID STABLE ASSAY

### Procalcitonin (PCT)

<b>Method</b>	Latex Enhanced Immunoturbidimetric
<b>On-Board Stability*</b>	4 Weeks
<b>Calibration Interval*</b>	2 Weeks on Hitachi 917
<b>Correlation</b>	N = 41 R <sup>2</sup> = 0.9815 Slope = 0.9141 y-Intercept: = -0.3137
<b>Calibration Levels</b>	6 Point Calibration
<b>Linearity</b>	0.17 - 60 ng/ml
<b>Sample type</b>	<ul style="list-style-type: none"> <li>• Serum</li> <li>• EDTA Plasma</li> <li>• Lithium Heparin Plasma</li> </ul>
<b>Sample Size</b>	15 µl

### CONVENIENT

- Liquid Stable format
- Minimal sample of only 15 µl needed
- No need for dedicated instrumentation

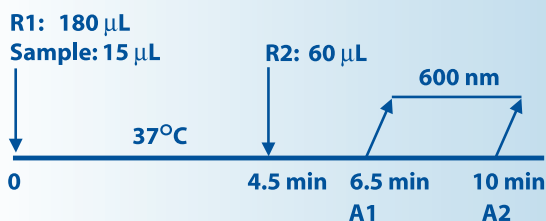
### PRECISE

Three samples containing Procalcitonin were tested on a Hitachi 917, in one run with 20 replicates. Within-Run Precision is listed in the table below:

### Analytical Characteristics Within-Run Precision

	Level 1	Level 2	Level 3
<b>Number of Data Points</b>	20	20	20
<b>Mean (ng/mL)</b>	0.50	2.14	13.13
<b>SD (ng/mL)</b>	0.036	0.069	0.353
<b>CV (%)</b>	7.2%	3.2%	2.7%

### Assay Method



### Analyzer Dependant\*

Parameter questions for Procalcitonin (PCT) Assay should be addressed to Diazyme technical support. Please call 858.455.4768 or email [support@diazyme.com](mailto:support@diazyme.com)

### DIAZYME LABORATORIES

12889 Gregg Court, Poway, CA 92064  
PO Box 85608, San Diego, CA 92186  
Tel: 858-455-4768 888-DIAZYME  
[www.diazyme.com](http://www.diazyme.com) [sales@diazyme.com](mailto:sales@diazyme.com)

### DIAZYME EUROPE GMBH

Zum Windkanal 21, 01109 Dresden, Deutschland  
Tel. +49 (0) 351 886 3300 Fax +49 (0) 351 886 3366  
[sales@diazyme.de](mailto:sales@diazyme.de)

