

Countstar
Easy Cell Analysis

**Countstar Fluorescence
Cell Analyzer**

Countstar
Easy Cell Analysis

Shanghai Ruiyu Biotech CO.,Ltd.

Tel: +86-021-52969887

Fax: +86-021-52261001

Email: marketing@countstar.cn

Web: www.countstar.cn

Address: 6000 Shenzhuan Road, Building C2, Room, Songjiang District, Shanghai,



Easy Cell Analysis



Countstar Fluorescence Cell Analyzer

Countstar FL is an image-based cell analysis platform.4 Excitation lights, maximum 13 fluorescent channel combination, support any dye of different wavelength. Patented fixed focus, avoids manual error and makes sure the stability of fluorescent signal. Users only need to click 1 button to get result through pre-loaded protocols. Customization function together with multiple fluorescent channel provide a whole solution for cell fluorescent experiment. All-in-one design with FCS-like data analyze, bring user a new experience of experiment.

Features

4 excitation and 5 light filter, maximum 13 fluorescent channel plus 1 bright field.

Flexible combination from bright field to multiple fluorescent channel is available, and further upgrade is approved.

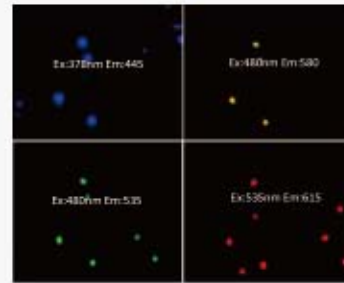
Specification	378	480	535	640
445/45 nm	●			
536/50 nm	●	●		
585/40 nm	●	●	●	
616/24 nm	●	●	●	
675/50 nm	●	●	●	●

PS. Other excitation light and emission filter are also available.

Personalized Experiment Protocol and Auto Fluorescent Channel Switching, 5 Samples in 1 test.

Countstar FL offers a flexible combination of fluorescent channels (up to 13) together with redefinable camera parameters, recognition parameters and other parameters, realizing unlimited experiment ideas.

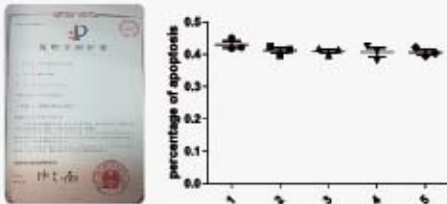
DIY your own experiment, user can customize the number of filed, sampling quantity, data exporting format and even icon, make your research life lively.



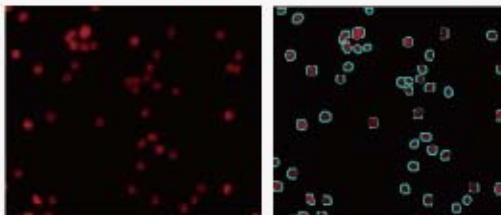
Auto fluorescent channel switching, Can test 4 fluorescent channel one time

Stability and Accuracy of Fluorescence Analysis

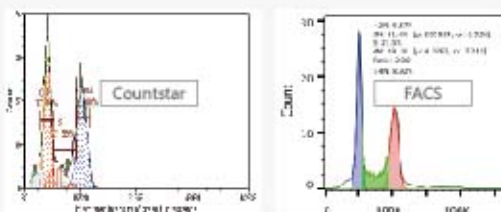
Patented Fixed focus, make sure fluorescent signal is fully collected even cells are of different shape and size.



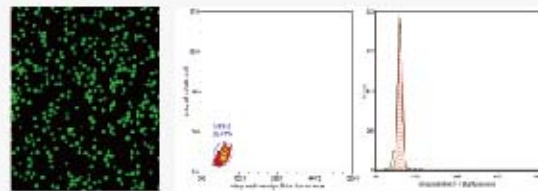
Accurate image segmentation, acquire up to 23 characteristics of each target cell.



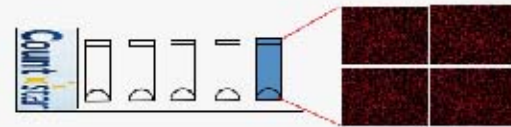
Comparable results with FACS
MCF-7 treated with drug



Optimized optical system, ensure the accuracy of fluorescence quantitative.



Number of vision field for each chamber is customizable.



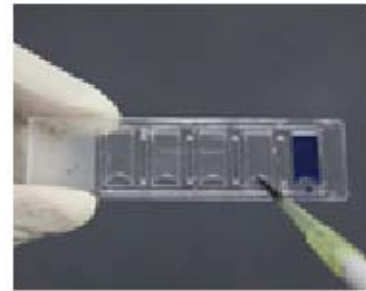
Customizable sampling quantity for each sample.



	sub G1	G0/G1	S	G2/M
Countstar	5.23%	37.79%	21.69%	33.00%
FACS	6.87%	31.60%	23.50%	29.10%

10 Touch Screen, Flexible Fashion Modern Design , Easy Your Cell Analysis

Industry level Multi touch screen, allow user to operate even with lab gloves, zoom in and out picture with 2 fingers at the same time. Besides, Changeable icon and 5 chambers in 1 slide design, only need 20 μ L sample, easily to touch and operate.



Powerful Software Function

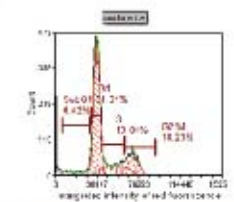
Pre-loaded experiment protocol

Pre-loaded protocols, from sample to result with only 1 button and no need to modify any parameter.



Multi-level User Access Control and E-signature, Meet the Requirements of FDA 21 CFR Part 11.

User can set different access level, guarantee instrument and data safety.



Data management system keeps all the image, data, operation information and user information automatically and traceable, easy data search and management.

Countstar FL can export data in Excel, PDF, JPG, PNG and FCS format, highly compatible with De Novo.

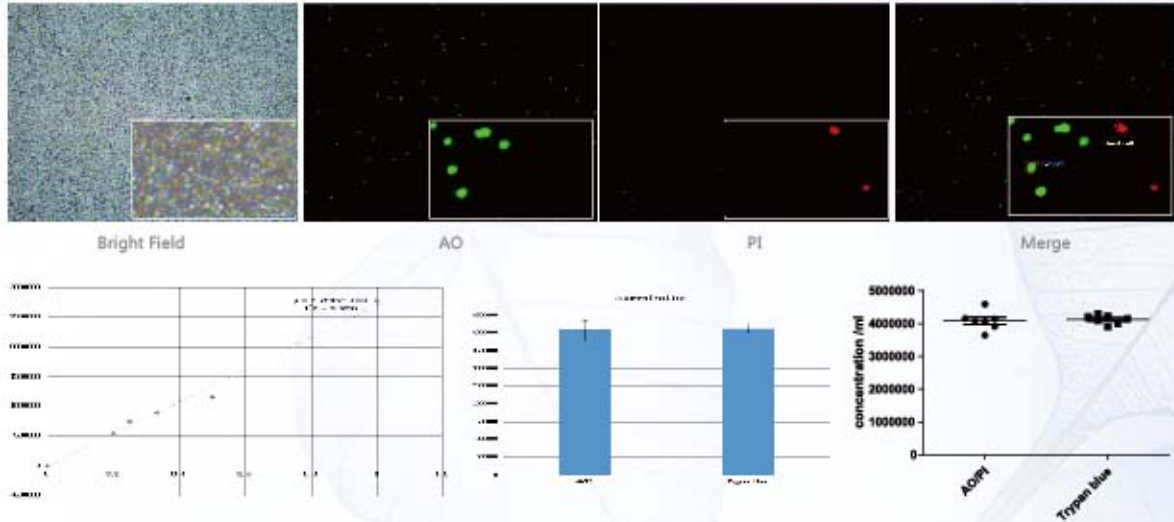
IQ/PQ/OQ Service and Beads Standard are Available

Supply different fluorescence intensity beads with calibration and verification service for the intensity and distribution of fluorescence

Applications

Dual – fluorescents Cell Viability and Concentration

Both AO/PI and AM/PI methods are replacement of traditional trypan blue staining or MTT method for cell viability test because of cytotoxicity to cells. Countstar FL have build-in protocol for Both AO/PI and AM/PI methods which makes cell viability test by only press 1 button.

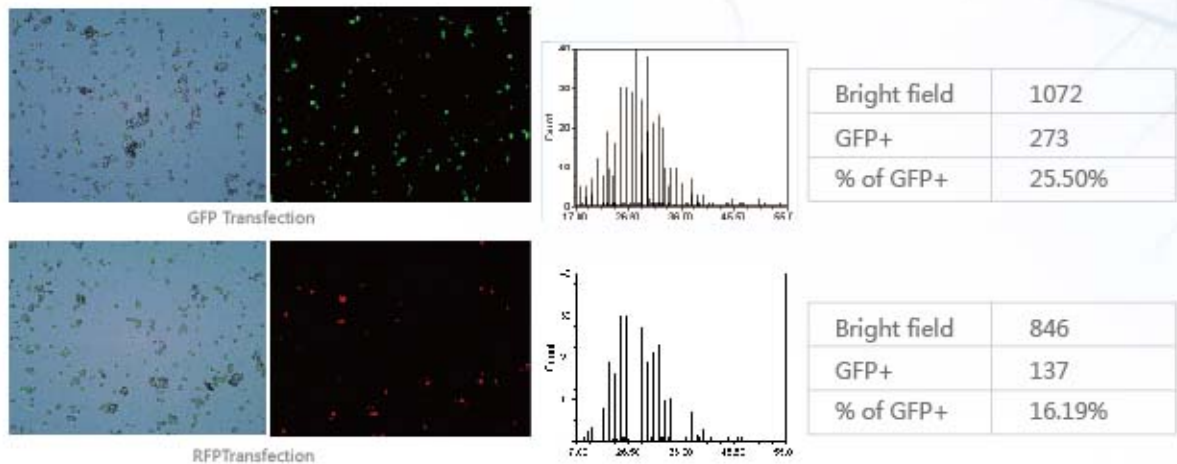


PBMCs are tested after series dilution. Graph shows good linearity of result. $R^2=0.9895$

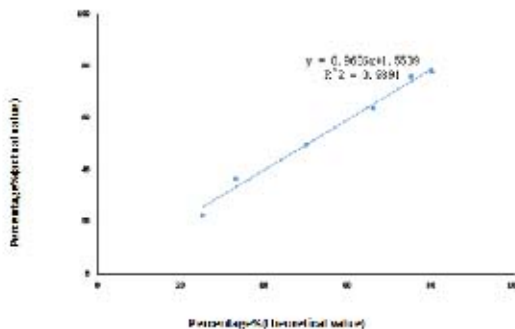
Via Countstar technology, it becomes possible to measure PBMCs viability without lysing of RBC. Here shows the result of PBMCs viability test result (without lysing of RBC) by AO/PI staining method.

Cell Transfection

Countstar FL can quickly and accurately complete the test.



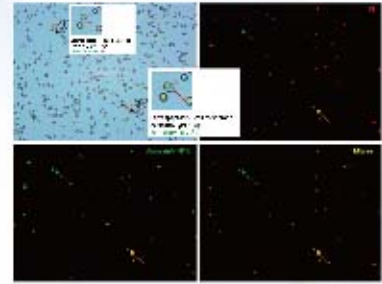
The linear of Countstar test transfection effect



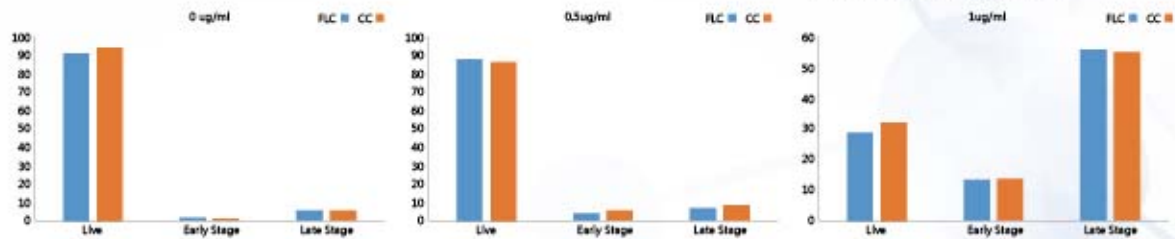
With Countstar, researchers do never need to "guess" the transfection efficiency from microscope which leads to false result for the down-stream experiments or productions.

Apoptosis

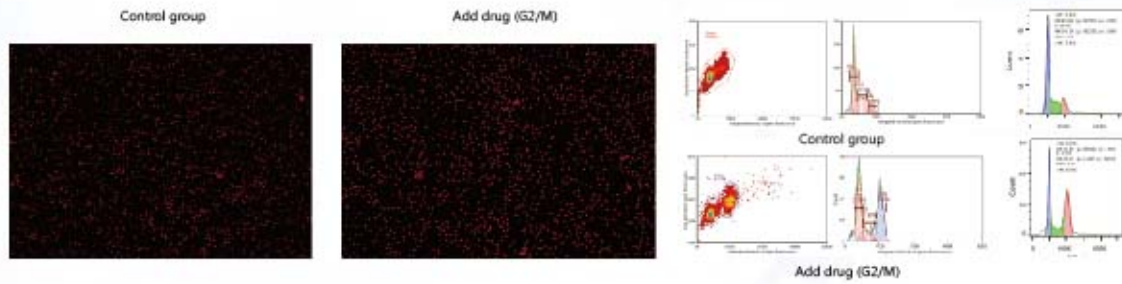
Now researchers are going deeper in apoptosis research. It is now described as early, middle and late stage and different indicators will show the step of apoptosis. Countstar FL offers an image-based solution to "see" and to analyze all of these steps with the pre-loaded protocols. 1 click and 1 min analyzing, 5 chamber result will be on screen.



In this experiment, Countstar FL achieved comparable result as flow cytometry.

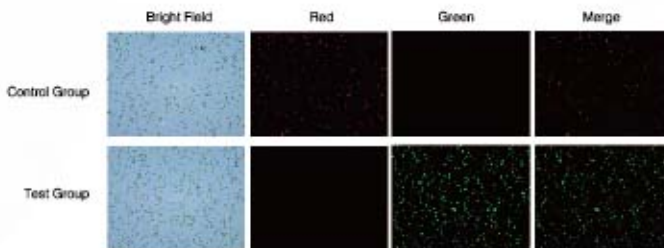


Cell Cycle Result



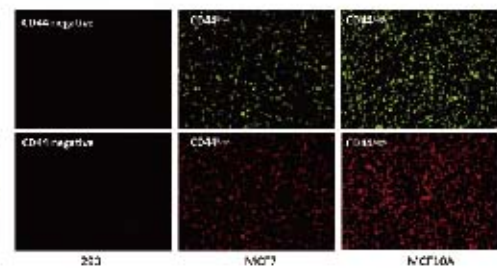
Countstar is highly compatible with De Novo software. Countstar can provide flow cytometry like result which make sure user have image result and analyze result.

Mitochondrial Membrane Potential



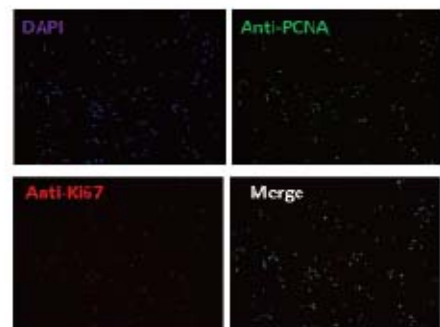
Control group that JC-1 dye cell into red. After treated with 5-CCP, mitochondrial will be stained green which reveals the loss of membrane potential.

Cell Surface Marker



Multi Fluorescence Application

In the study, the expression of 2 or more proteins in the cell were detected by immunofluorescence assay, and usually use DAPI as internal control, it will use at least 3 dyes. To discriminate different sub cell population, the cells were stained with multiple CD molecules conjugate different dyes.



Specification

LED light: white, purple (380-385nm) , blue (465-485nm) , green (520-535nm) , red (610-620nm) , packed with 5 light and are all customizable.

Ex/Em : 375/460nm, 480/535nm, 525/600nm, 620/665nm , packed with 4 light filters, all filters are customizable.

Camera: CCD

USB : USB2.0 or USB3.0

Memory: 4G

Hard disk: 500G

Power supply: 210-230 V, AC

Weight: 11kg

Dimension: 254mm×303mm×453mm

Temperature: +10°C ~ +40°C

